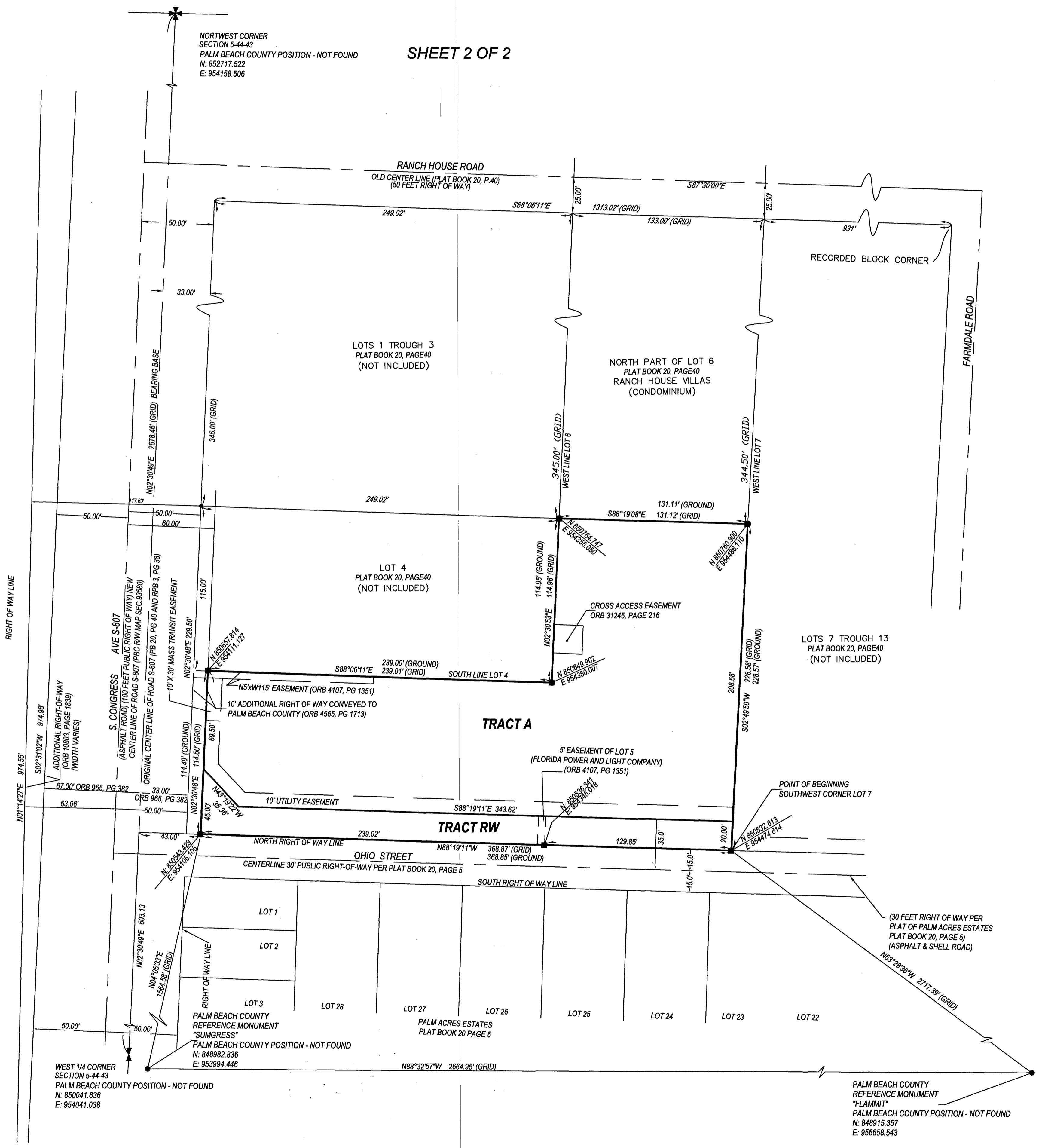
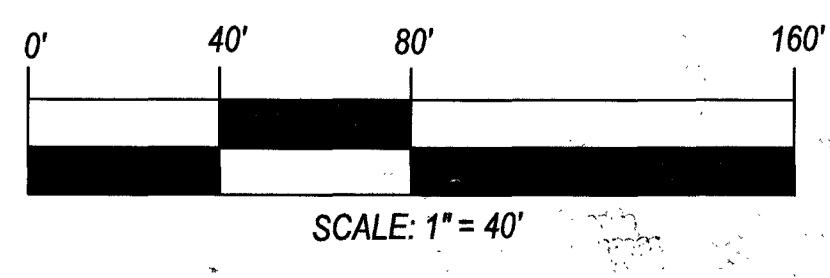
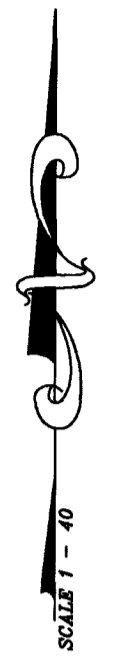


177

ETC OFFICE/WAREHOUSE

BEING A REPLAT OF A PORTION OF LOTS 5 AND 6, PLAT OF MORRISON SUBURBAN DEVELOPMENT,
ACCORDING TO THE PLAT THEREOF, AS RECORDED IN PLAT BOOK 20, PAGE 40, OF THE PUBLIC RECORDS OF PALM BEACH COUNTY, FLORIDA, ALL LYING AND BEING IN
SECTION 5, TOWNSHIP 44 SOUTH, RANGE 43 EAST, PALM BEACH COUNTY, FLORIDA

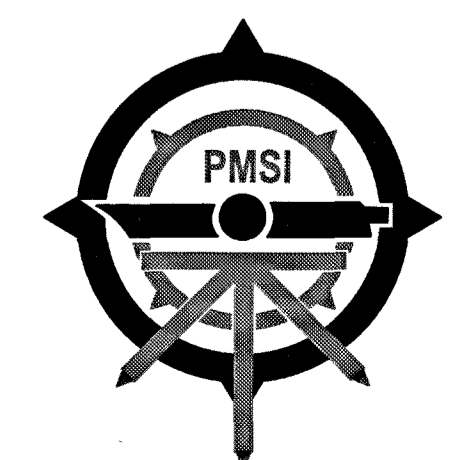
SHEET 2 OF 2



STATE PLANE COORDINATE NOTES:
ALL DISTANCES ARE GRID (UNLESS OTHERWISE NOTED)
PROJECT SCALE FACTOR=1.000044704
PROJECTION (TRANSVERSE MERCATOR)
ZONE (FLORIDA EAST ZONE)
DATUM NAD 83-1990 ADJUSTMENT
COORDINATES SHOWN HEREON ARE GRID
GROUND DISTANCE X SCALE FACTOR = GRID DISTANCE
UNITS US SURVEY FEET
BEARINGS SHOWN HEREON ARE GRID.

*** LEGEND:**
PSM = FLORIDA LICENSED SURVEYOR & MAPPER
LB = LICENSED BUSINESS
LS = LICENSED SURVEYOR
PB = PLAT BOOK
RPB = ROAD PLAT BOOK
ORB = OFFICIAL RECORD BOOK
FS = FLORIDA STATUTES
RW = RIGHT OF WAY
PG = PAGE
PCN = PROPERTY CONTROL NUMBER
SQ. FT. = SQUARE FEET
■ = SET CONCRETE MONUMENT (PRM LB 8261)
○ = FOUND IRON ROD (DESCRIPTION NOTED)

PREPARING SURVEYOR & MAPPER'S STATEMENT:
THIS INSTRUMENT WAS PREPARED BY DOUG WALKER,
P.S.M. # LS 7211, STATE OF FLORIDA,
IN AND FOR THE OFFICES OF PRINCIPAL MERIDIAN SURVEYING, INC., AT
4546 CAMBRIDGE STREET, WEST PALM BEACH, FLORIDA, 33415.



**PRINCIPAL
MERIDIAN
SURVEYING INC.**
4546 CAMBRIDGE STREET
WEST PALM BEACH, FL 33415
PHONE 833.478.7764 / FAX 561.478.1094
WWW.PMSURVEYING.NET
JOB # 06010023

PALM BEACH COUNTY
REFERENCE MONUMENT
"FLAMMIT"
PALM BEACH COUNTY POSITION - NOT FOUND
N: 848915.357
E: 956658.543

WEST 1/4 CORNER
SECTION 5-44-43
PALM BEACH COUNTY POSITION - NOT FOUND
N: 850041.636
E: 954041.038

NORTHWEST CORNER
SECTION 5-44-43
PALM BEACH COUNTY POSITION - NOT FOUND
N: 852717.522
E: 954158.506

PALM BEACH COUNTY
REFERENCE MONUMENT
"SUMGRESS"
PALM BEACH COUNTY POSITION - NOT FOUND
N: 848962.836
E: 953994.446